



## **M & E**

### Mechanical & Engineering

#### **About us**

Climate Energy Group is a leading electrical and HVAC contractor that helps businesses and organisations reduce their carbon footprint and save money.

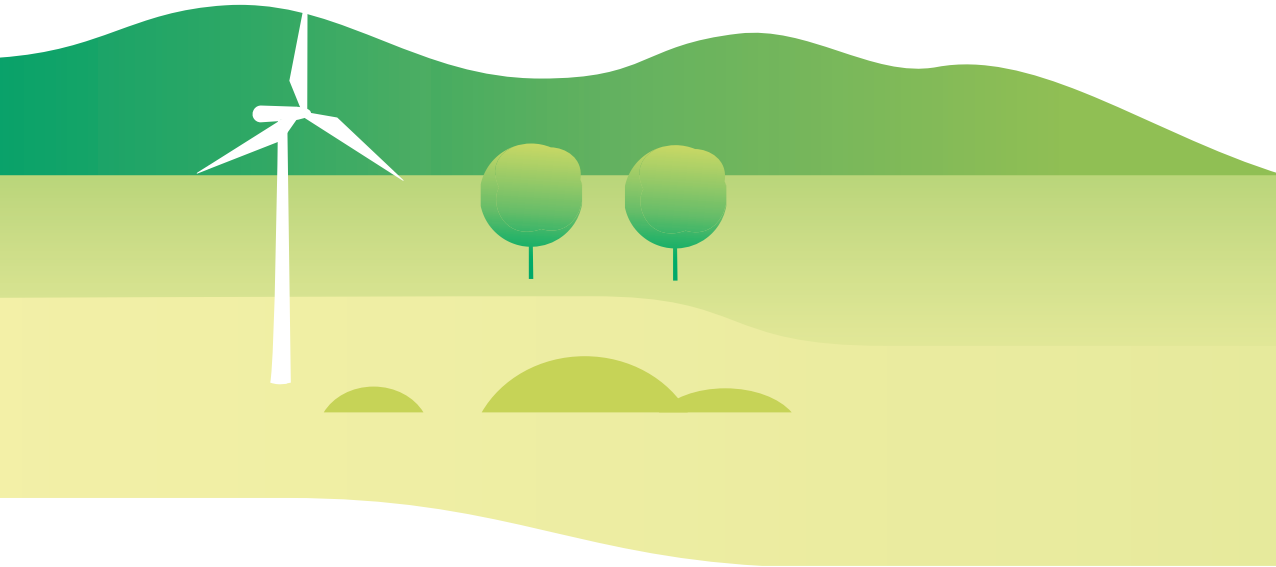
From our Cheshire base, we serve clients throughout the U.K by Winstalling unique tailored equipment and smart controls.

The installation of new systems, or the upgrading of existing equipment can transform the look and feel of a building, whilst reducing operational costs and driving efficiency.



## BEMS

We provide award winning BEMs systems nationally, these cutting-edge systems have been put in place to save our clients operational expenditure and reduce carbon footprint this helps in the push for our clients to become net carbon zero by 2050.



# About BEMS

---

We provide award winning BEMS systems nationally; these cutting-edge systems have been put in place to save our clients operational expenditure and reduce carbon footprint this helps in the push for our clients to become net carbon zero by 2050.

In addition to these benefits clients are able to monitor, control and make changes to their assets remotely, by standardising procedures across clients estates we mitigate the risk that exists when individual site managers operate in different manners, by configuring all sites to operate and report in the same way. Once the system is set up, it enables clients to identify whether sites are under or over performing regarding their energy usage based on baseline Kilowatts per SQFT usage.

## Maintenance Benefits

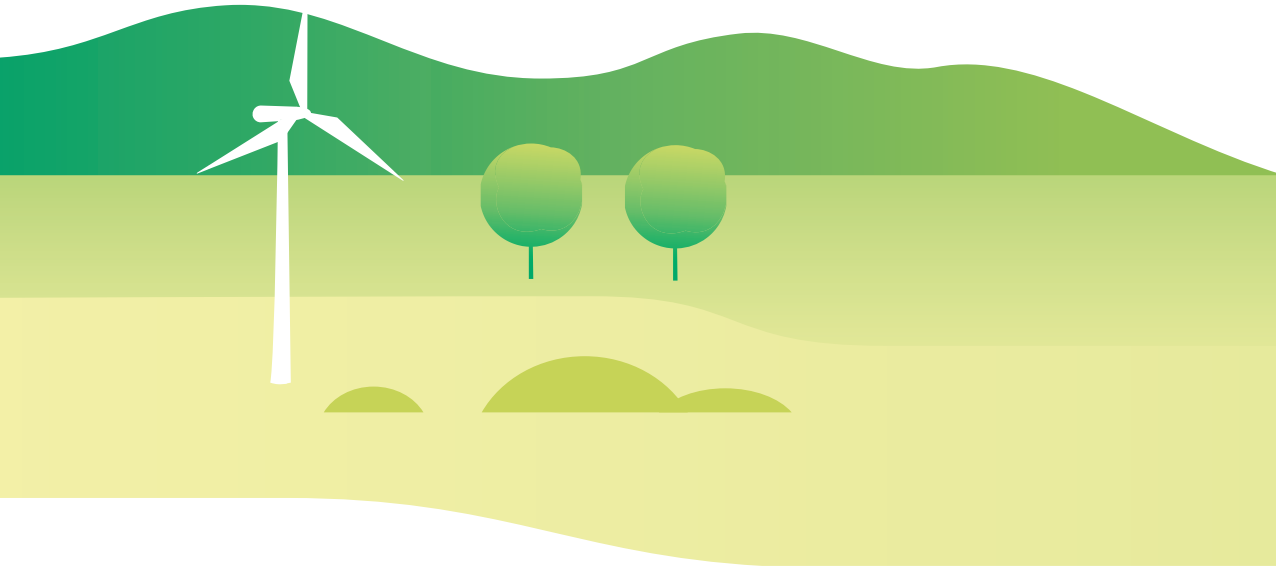
By constant real time monitoring individual sites we are able to receive live information including fault codes once these code are deciphered clients FM teams can optimise their maintenance regimes therefore Reducing further cost and carbon usage by allowing the FM teams to direct their engineers to attend site with the required parts first time therefore they don't have to attend multiple times to fix an issue.

- LTHW & LPHW heating systems
- Mechanical ventilation including ductwork installation and fabrication
- Air handling Units
- Heat recovery systems
- Process & chilled water systems
- Air to water heat pumps
- Air conditioning systems
- Boiler Room Replacement
- Close Control Cooling
- Warm Air Heating
- Gas Services (gas safe)
- Oil Installations (OFTEC)
- LPG installations
- Plumbing installations



## HVAC

We have extensive experience working with industrial and commercial customers to deliver cutting edge energy efficient HVAC services. We not only provide first-class design and installation, but also planned maintenance, reactive maintenance and refurbishment of existing heating, ventilation and air conditioning systems.



# About HVAC

---

Our commitment to providing a professional service includes a team of highly trained engineers, all of whom carry Gas Safety certifications.

We are experts at delivering HVAC services across a breadth of sectors including retail, commercial, education and health, as part of this we can offer a full design package or can work alongside your in-house team to deliver installation on existing schemes.

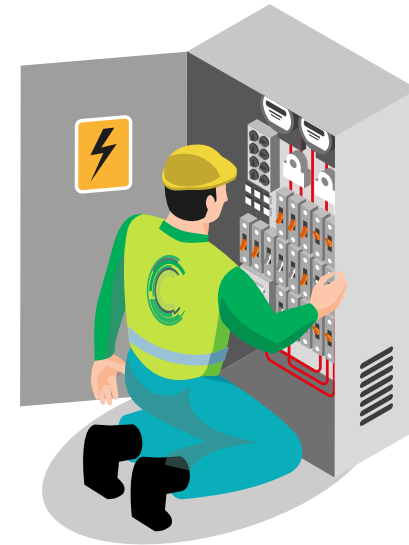
We are dedicated to providing energy efficient heating systems, not only for clients savings but also to help them become net zero carbon by 2050 as per government mandate, our bespoke BEMs systems can be individually designed to suit all aspects of our HVAC installations working specifically to all our clients individual requirements.

- LTHW & LPHW heating systems
- Mechanical ventilation including ductwork installation and fabrication
- Air handling Units
- Heat recovery systems
- Process & chilled water systems
- Air to water heat pumps
- Air conditioning systems
- Boiler Room Replacement
- Close Control Cooling
- Warm Air Heating
- Gas Services (gas safe)
- Oil Installations (OFTEC)
- LPG installations
- Plumbing installations



## Electrical

We are specialists in electrical energy efficient design including IoT and smart building integration. We can help our clients achieve the perfect planned electrical infrastructure that will enable optimised energy use without compromising their existing design philosophy for the look and feel of their building.



# About Electrical

---

This design is then aligned with our energy usage optimised electrical designs. Alternatively, we are happy to work alongside clients existing consultants to provide a fully costed installation plan.

We continue to assess the development of any project, offering advice and modifying plans if necessary. We can value engineer any project to meet clients' budget restrictions whilst still providing a first-class service. By only using top quality materials we are able to ensure that all installations benefit from the longest possible working life therefore keeping future maintenance issues to a minimum.

Our team of directly employed engineers have many years of installation experience across a wide range of sectors covering retail, manufacturing, education, critical data, government and hospitality. Our national service allows us to offer competitive quotes throughout the UK.

# About Us

“

Climate are very professional, knowledgeable and will tailor their systems to suit the customers needs.

”

— Regional Energy Manager

Follow Us:

 @ ClimateEG

 @ climate-energy-group

# Account Management & Savings

## Account Management

Our experience has shown that by assigning each client a dedicated account manager who works closely with you to understand specific project needs allows every project to be completed to the highest standard with a minimum amount of difficulties.

By giving your account manager a level of accountability to you this will ensure you peace of mind throughout the process.

You will receive clear communication, a single point of contact and a responsive, efficient service. This combined with our highly experienced in-house engineers and the use of the most innovative technology provides a dynamic service that puts you in control and enables installations to take place with minimal business impact.



PER YEAR WE ARE SAVING OUR CLIENTS	
Kilowatts of Energy	54,000,000.00
Cash	£7,020,000.00
Carbon in KG	5,182,697.48
The equivalent of trees that would need to be planted each year	228,514.00





**Call Us Today**  
01270 446170

[www.climateenergygroup.co.uk](http://www.climateenergygroup.co.uk)

Climate Energy Group  
Unit 3,  
Wheelock Heath Business Court  
Alsager Road, Winterley  
Cheshire, CW11 4RQ

**Follow Us:**

 @ ClimateEG

 @ climate-energy-group

