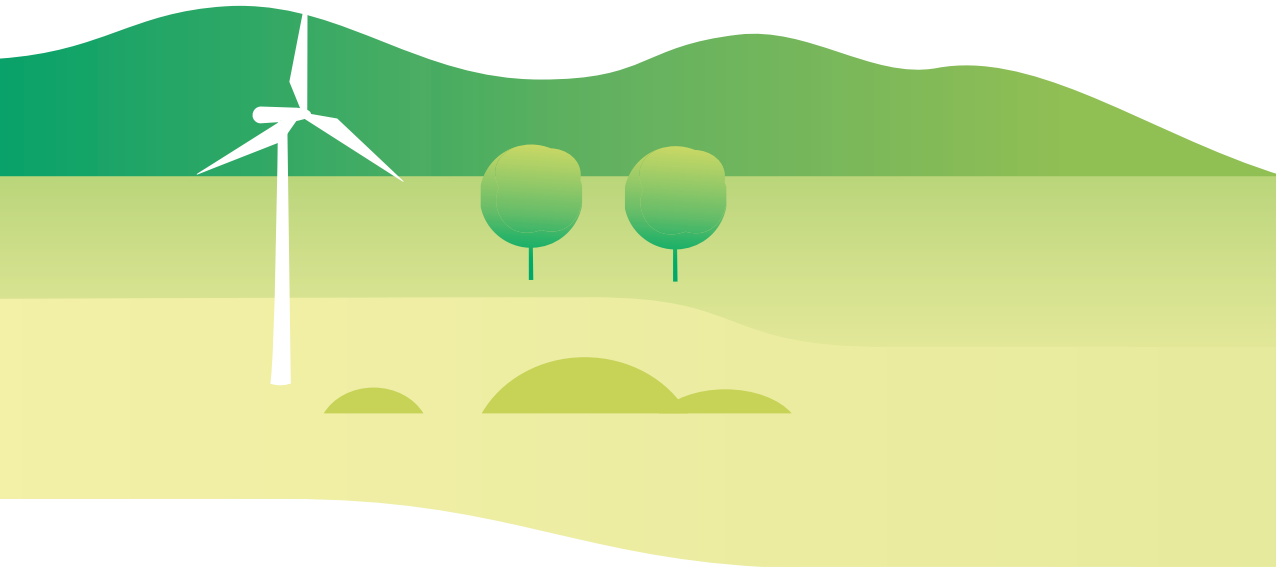




BEMS

We provide award winning BEMs systems nationally, these cutting-edge systems have been put in place to save our clients operational expenditure and reduce carbon footprint this helps in the push for our clients to become net carbon zero by 2050.



About Us

Climate Energy Group is a leading electrical and HVAC contractor that helps businesses and organisations reduce their carbon footprint and save money. From our Cheshire base, we serve clients throughout the U.K by installing unique tailored equipment and smart controls.

The installation of new systems, or the upgrading of existing equipment can transform the look and feel of a building, whilst reducing operational costs and driving efficiency.

Follow Us:

 @ ClimateEG

 @ climate-energy-group

About BEMS

We provide award winning BEMs systems nationally; these cutting-edge systems have been put in place to save our clients operational expenditure and reduce carbon footprint this helps in the push for our clients to become net carbon zero by 2050.

In addition to these benefits clients are able to monitor, control and make changes to their assets remotely, by standardising procedures across clients estates we mitigate the risk that exists when individual site managers operate in different manners, by configuring all sites to operate and report in the same way. Once the system is set up, it enables clients to identify whether sites are under or over performing regarding their energy usage based on baseline Kilowatts per SQFT usage.

Maintenance Benefits

By constant real time monitoring individual sites we are able to receive live information including fault codes once these code are deciphered clients FM teams can optimise their maintenance regimes therefore Reducing further cost and carbon usage by allowing the FM teams to direct their engineers to attend site with the required parts first time therefore they don't have to attend multiple times to fix an issue.

- Remote Access
- Remote modifications
- Operational cost reductions
- Asset failure predictions
- Asset optimisation
- Remote visibility
- Carbon reductions
- Real time fault monitoring
- Real time meter monitoring
- Reduced downtime
- Maintain operational efficiency
- Proactive maintenance

About Us

“

Climate are very professional, knowledgeable and will tailor their systems to suit the customers needs.

”

— Regional Energy Manager

Follow Us:

 @ ClimateEG

 @ climate-energy-group

Account Management & Savings

Account Management

Our experience has shown that by assigning each client a dedicated account manager who works closely with you to understand specific project needs allows every project to be completed to the highest standard with a minimum amount of difficulties.

By giving your account manager a level of accountability to you this will ensure you peace of mind throughout the process.

You will receive clear communication, a single point of contact and a responsive, efficient service. This combined with our highly experienced in-house engineers and the use of the most innovative technology provides a dynamic service that puts you in control and enables installations to take place with minimal business impact.



PER YEAR WE ARE SAVING OUR CLIENTS	
Kilowatts of Energy	54,000,000.00
Cash	£7,020,000.00
Carbon in KG	5,182,697.48
The equivalent of trees that would need to be planted each year	228,514.00



Call Us Today
01270 446170

www.climateenergygroup.co.uk

Climate Energy Group
Unit 3,
Wheelock Heath Business Court
Alsager Road, Winterley
Cheshire, CW11 4RQ

